

5th June 2008

Rock chip sampling defines 500m zone averaging 22g/t gold

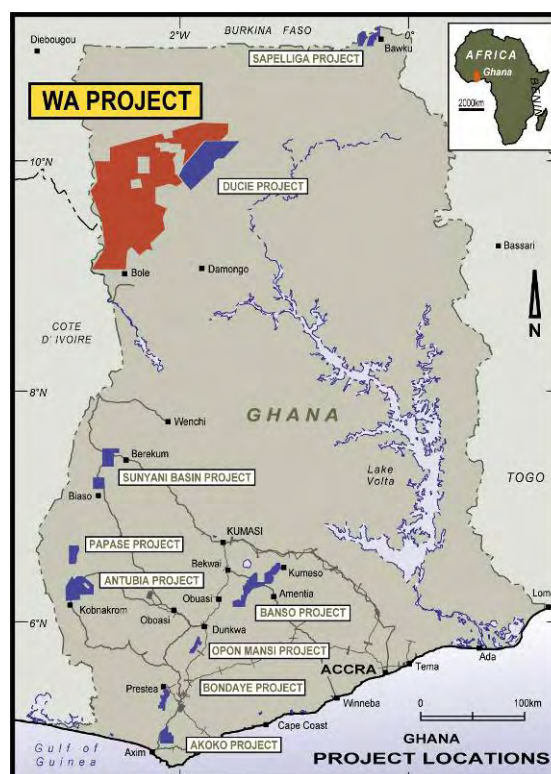


Castle Minerals Limited (ASX:CDT) is pleased to advise that rock chip sampling at its Wa project has defined a high-grade zone of quartz vein hosted gold mineralisation over 500m long.

Nine rock chip samples collected from quartz vein material exposed in shallow workings along a 500m zone averaged 22.2g/t gold. This mineralised area is hosted within a discrete granite body bounded by sediments to the north and south.

The zone of quartz veining is interpreted as being along the same structure as the neighbouring Julie gold deposit (5km to the east). The Julie deposit is an east-west trending zone with shear-hosted gold mineralisation occurring along a granite/basalt contact. Crew Gold (CRU:TSX) has reported an unclassified (inferred) resource of approximately 3.3 million tonnes for the top 30m of the Julie target, containing about 300,000 oz gold.¹

Castle Managing Director Mike Ivey said "the continuity of the quartz veining and workings over 500m, along with the consistent high grade results are particularly encouraging. The geological setting is also favourable with gold mineralisation preferentially developed in the granite. Our sampling program has defined numerous anomalies over a large area at Wa and with these results our prospects of defining significant high-grade mineralisation look very good."



Seventy eight rock chip samples were collected as part of a program of mapping and field checking of the significant gold in soil anomaly returned from Castle's earlier program of geochemical sampling. Further mapping and sampling is proposed, including trenching of this zone.

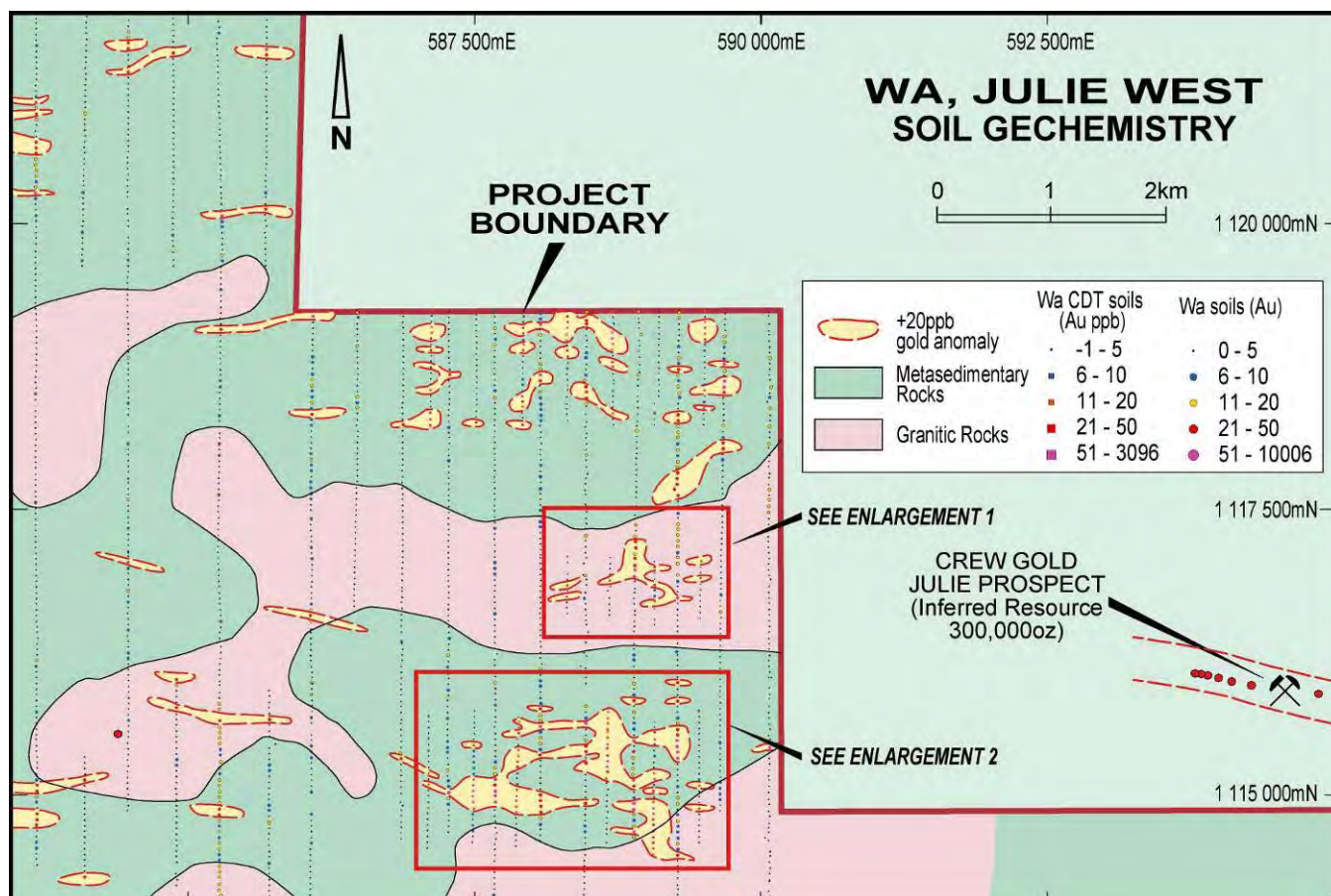
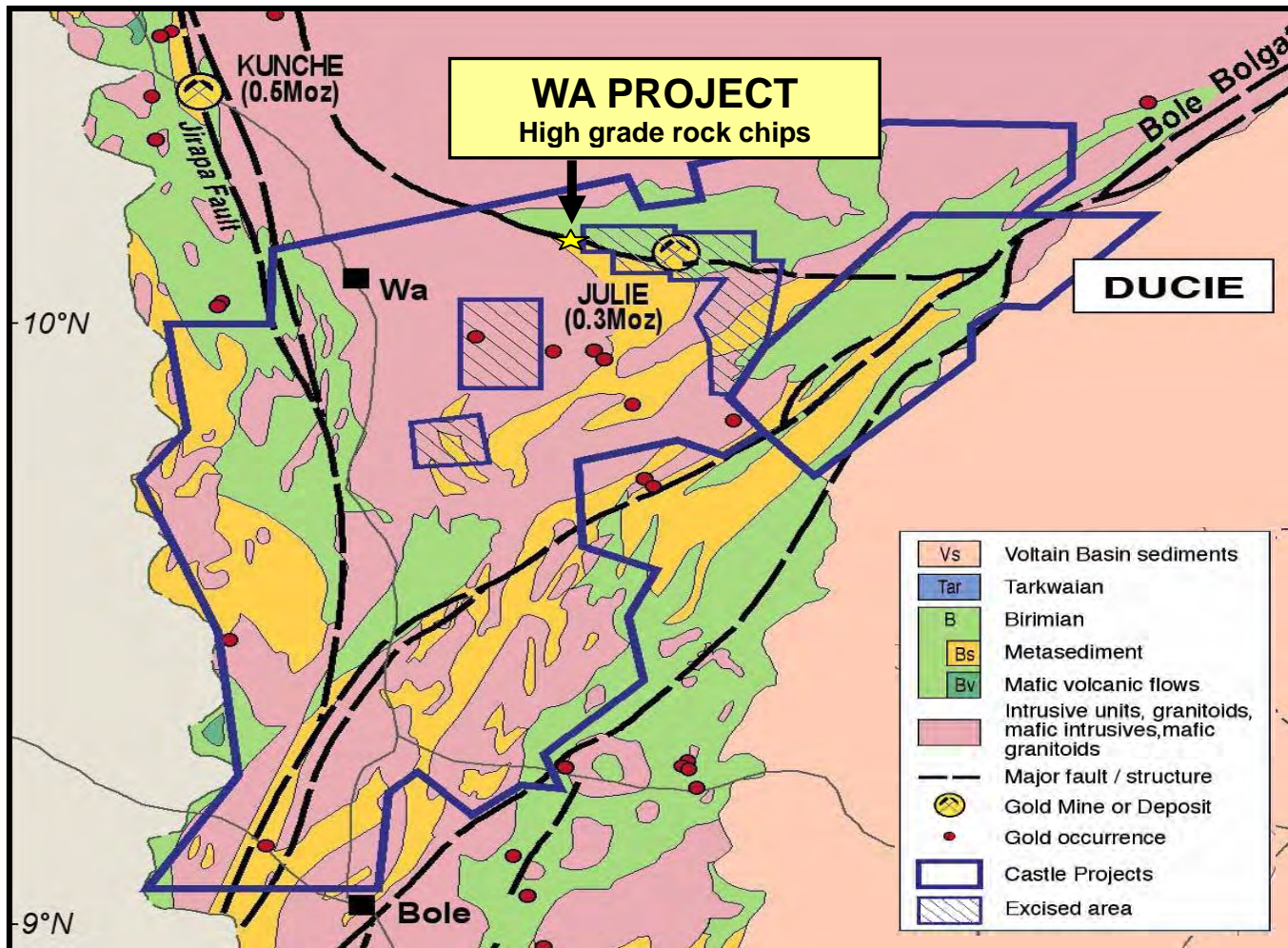
Background

The 8,200 km² Wa project was acquired from Newmont Ghana Gold Limited (NGGL) in November 2007. An extensive sampling and mapping program was undertaken in February and March 2008 with 2,269 samples collected from a variety of areas.



Quartz vein outcrop at Julie West

¹ Crew Gold Corporation website



For further information please contact:

Michael Ivey
Managing Director & CEO
+618 9322 7018 or 0419 868 787

Information in this announcement that relates to Exploration Results is based on information compiled by Michael Fowler, Castle Minerals Limited Exploration Manager, who is a Member of The Australasian Institute of Mining and Metallurgy. Michael Fowler is a permanent employee of Castle Minerals Limited and has sufficient experience that is relevant to the style of mineralisation and type of deposit under consideration and to the activity which he is undertaking to qualify as a Competent Person as defined in the 2004 JORC Code. Michael Fowler consents to the inclusion in the announcement of the matters based on the information in the form and context in which it appears.

Wa Project
Julie West Rock Chip Sample Results



UTMEast	UTMNorth	RL	Sample type	Sample Number	Assay values (g/t)	Assay rpt values (g/t)	Assay rpt2 values (g/t)	Assay rpt3 values (g/t)
556887	1010013		chip	42901	0.04			
556946	1010000		grab	42902	0.03			
556636	1009998		chip	42903	0.04	0.04		
540807	1020012	276	chip	42904	0.04			
540995	1020075	278	chip	42905	0.03			
540987	1020113	280	chip	42906	0.05			
540979	1020093	281	chip	42907	0.04			
545148	1019942	288	chip	42908	0.07			
545246	1020106	292	chip	42909	0.05			
545187	1018823	289	chip	42910	0.06			
537350	1019528	244	chip	42911	0.05			
538794	1020463	257	chip	42912	0.06			
577322	1024992	317	chip	42913	0.04	0.04		
577322	1024992	317	chip	42914	0.1			
577679	1024922	329	chip	42915	0.04			
577960	1024987	330	chip	42916	0.1			
578312	1024904	328	chip	42917	0.03			
579380	1029895	289	chip	42918	0.03			
582777	1029860	288	float	42919	0.02			
583951	1029856	283	chip	42920	0.02	0.05		
553684	1099967	271	chip	42921	0.04			
553444	1099939	269	chip	42922	0.04			
553130	1099942	277	chip	42923	0.09			
544966	1100057	289	chip	42924	0.03			
545435	1099963	288	chip	42925	0.03			
545531	1099975	285	chip	42926	0.03			
545897	1099949	278	chip	42927	0.03			
545958	1099999	279	chip	42928	0.03			
545978	1099992	278	chip	42929	0.02			
587416	1115101	259	chip	42930	0.05	0.04		
587595	1114975	268	chip	42931	0.06			
587613	1115058	264	chip	42932	0.07			
587653	1115034	268	grab	42933	3.33	3.55		
587751	1114939	285	chip	42934	0.34			
587957	1114802	280	chip	42935	0.37			
587131	1114928	290	chip	42936	8.27	6.2	7.44	
587679	1115318	285	chip	42937	0.16			
588308	1115283	285	chip	42938	0.07			
588397	1115402	289	chip	42939	0.06			
588475	1115395	288	chip	42940	0.04	0.03		
588361	1115428	285	chip	42941	0.02			
588388	1115516	280	chip	42942	0.58			
589090	1116717	256	chip	42943	12.01	11.45	11.96	
589022	1116793	256	chip	42944	23.06	21.95	22.1	
588996	1116836	257	chip	42945	51.44	51.65	50.69	51.93
588934	1116914	258	chip	42946	12.2	11.12	11.08	
588904	1116947	258	chip	42947	5.22	4.2	4.91	
588868	1116979	259	chip	42948	6.99	8.57	7.19	
588829	1117045	257	chip	42949	48.32	48.31	51.15	51.1
588829	1117045	257	chip	42950	0.11	0.1		
588795	1117070	257	chip	42951	18.76	17.32	17.81	
630991	1111067	240	chip	42952	0.25			
630827	1111233	236	chip	42953	0.09			
630827	1111233	236	chip	42954	0.11			
630827	1111233	236	chip	42955	0.11			
629854	1110497	241	chip	42956	0.06	0.06		
629298	1110333	285	chip	42957	0.05			
629514	1110135	237	chip	42958	0.05			
629514	1110135	237	chip	42959	0.03			
629732	1109795	228	chip	42960	0.05	0.05		
629764	1109069	212	chip	42961	0.04			
629764	1109069	212	chip	42962	0.04			
629764	1109009	212	chip	42963	0.05	0.04		
623651	1089974	231	chip	42964	0.04			
623591	1089797	250	chip	42965	0.03			
589113	1118270	230	grab	42966	0.03			
589014	1118807	249	chip	42967	22.08	22.58	23.03	
589045	1115781	268	chip	42968	0.6			
589133	1118425	230	chip	42969	0.31			
589477	1117235	253	chip	42970	0.11			
589477	1117235	253	chip	42971	0.12			
589488	1116910	233	chip	42972	0.06			
589531	1119080	228	chip	42973	0.11	0.09		
588180	1119293	242	chip	42974	0.38			
588271	1118947	227	chip	42975	0.1			
588439	1118891	226	chip	42976	0.09			
588719	1118891	232	chip	42977	0.06			
588840	1119233	228	chip	42978	0.07			

Notes :

- Final assay results from manually collected rock chip or surface grab samples (~2kg).
- All sample sites picked up by handheld GPS with accuracy of ~±10m. UTM30N WGS84
- Gold analyses performed using 50gm Fire Assay by Transworld Laboratories, Tarkwa, Ghana.