

High Grade Reef Discovered at Julie West

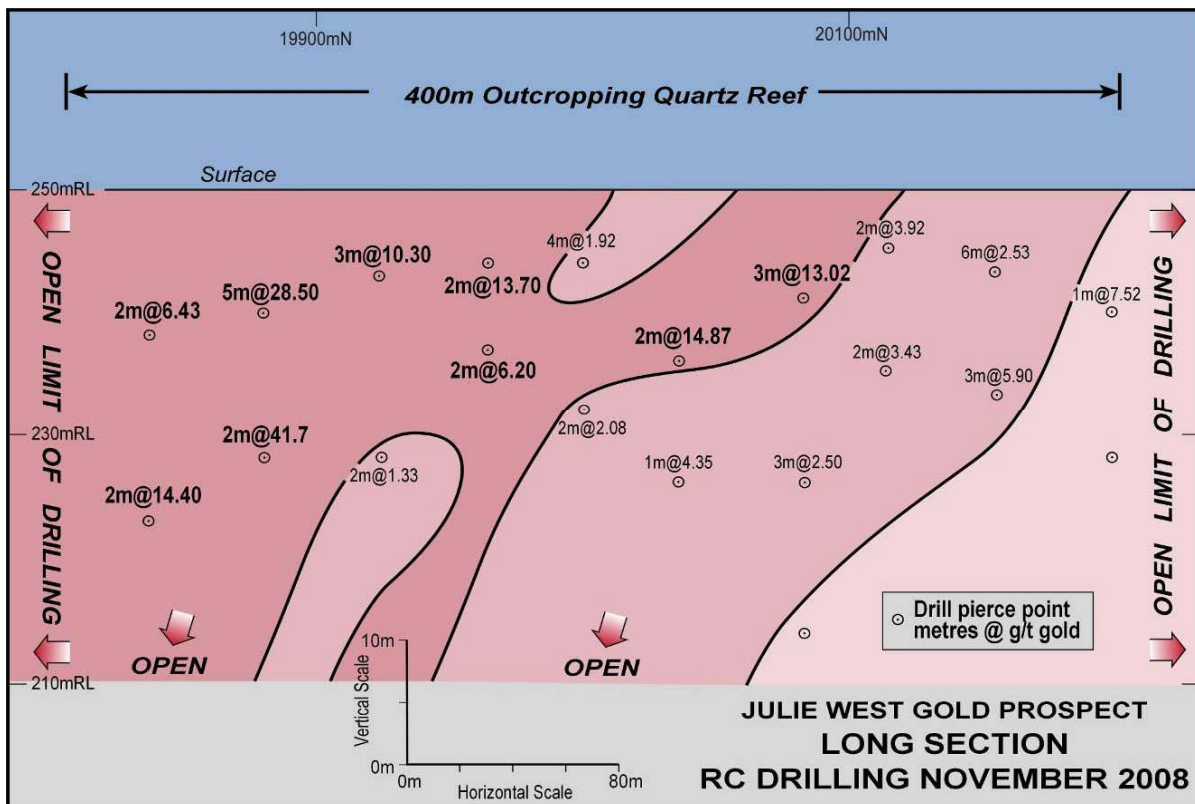
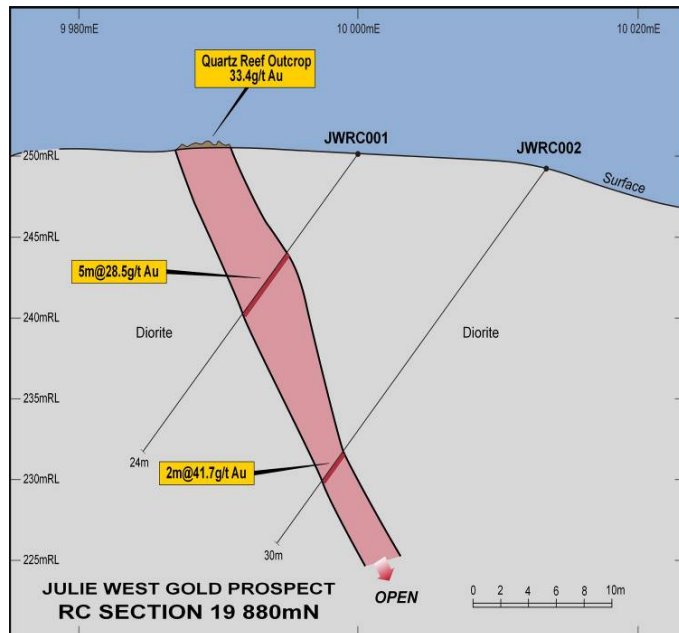
Castle Minerals Limited (ASX: CDT) is pleased to advise that reverse circulation drilling has confirmed the presence of a **laterally continuous high grade quartz vein** at its Julie West gold prospect in northern Ghana.

In total 21 holes were drilled with 19 reporting gold mineralization from a single quartz reef that outcrops for over 500m.

Best results from the program include:

- 5m @ 28.50 g/t gold (JWRC01)**
- 2m @ 41.70 g/t gold (JWRC02)**
- 2m @ 14.40 g/t gold (JWRC 07)**
- 3m @ 10.30 g/t gold (JWRC 08)**
- 2m @ 13.70 g/t gold (JWRC 10)**
- 2m @ 14.70 g/t gold (JWRC 14)**
- 3m @ 13.02 g/t gold (JWRC 16)**

Intercept widths are interpreted to closely represent the true width of the vein and importantly **excellent continuity is evident between the 40m spaced drill fences**.

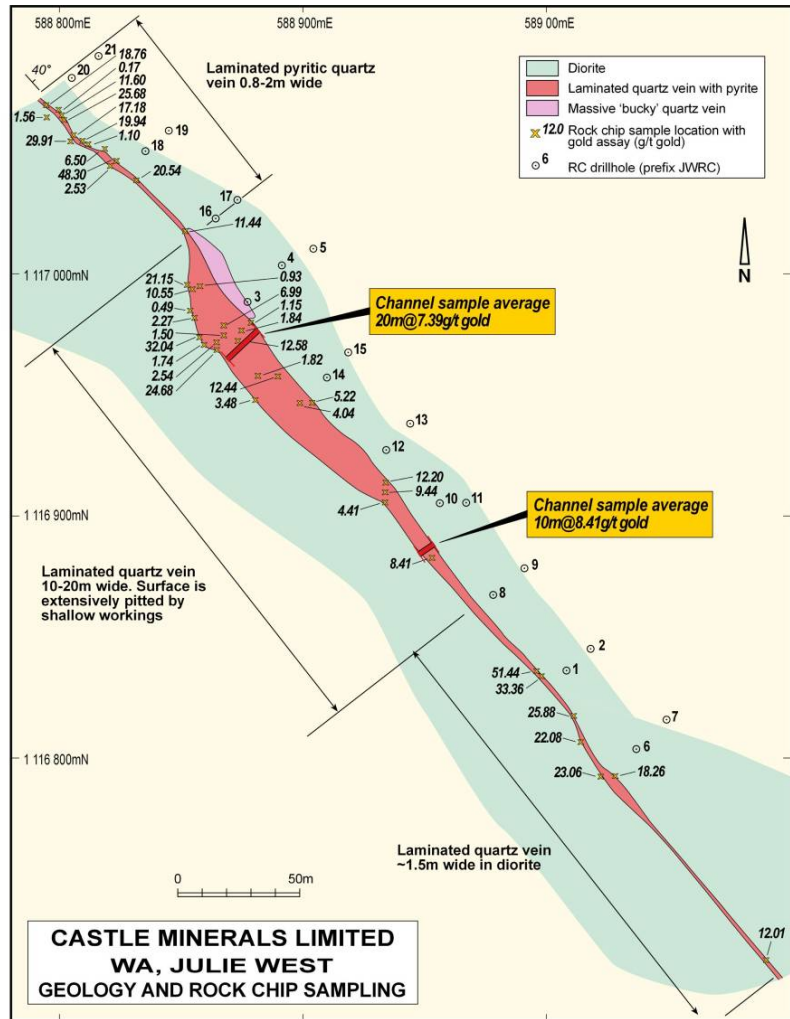


Gold mineralization is almost exclusively confined to the quartz reef with only subordinate grades being reported in the host diorite. Depth of weathering appears to be very shallow being limited to about 10m below surface.

Castle Managing Director Mike Ivey said today “this first ever drilling of the quartz reef at Julie West was designed as a shallow test to determine the continuity, orientation and grade of the reef. It has successfully defined high grade gold mineralisation over at least 300m strike and is open to the south for another 100m and based on recent site inspection, possibly another 300m.

The deeper drill intercepts include fresh pyrite and are interpreted as being primary mineralisation. Drill testing the down dip extent of this high grade shoot is a priority for early 2009 and we are currently arranging a rig to complete this work.”

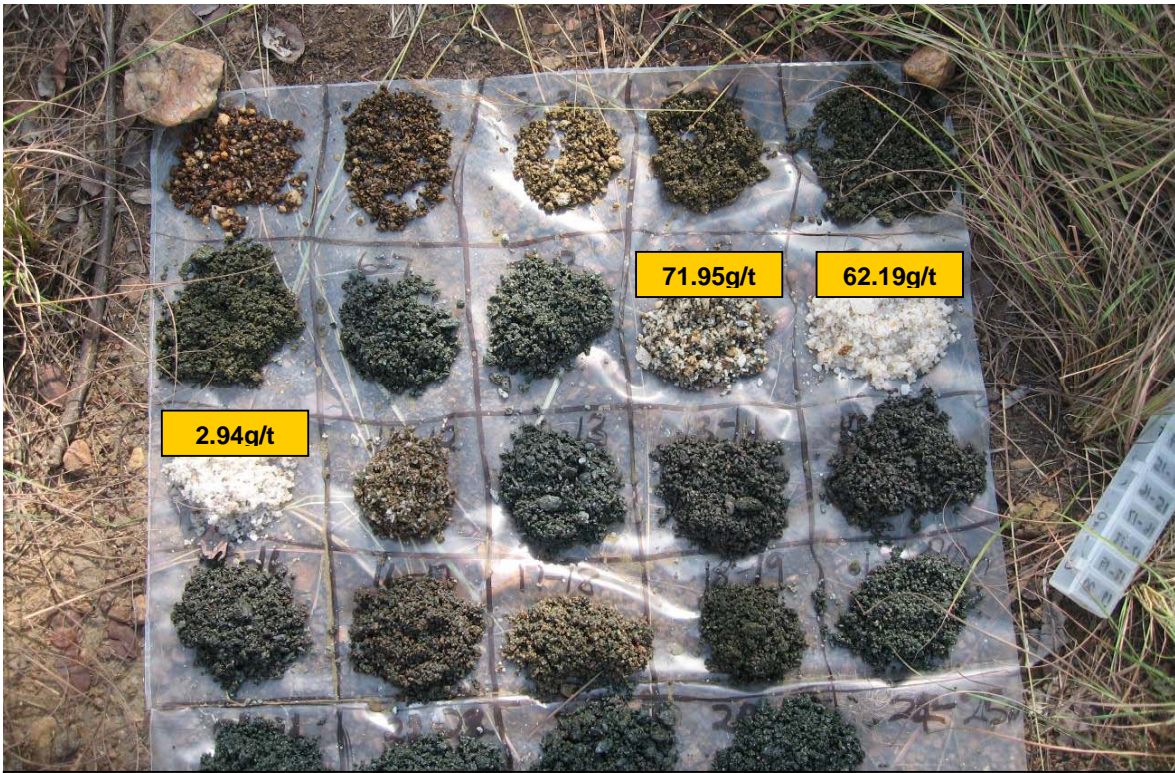
“The down dip potential of the mineralisation discovered to date is considerable, Ivey said.”



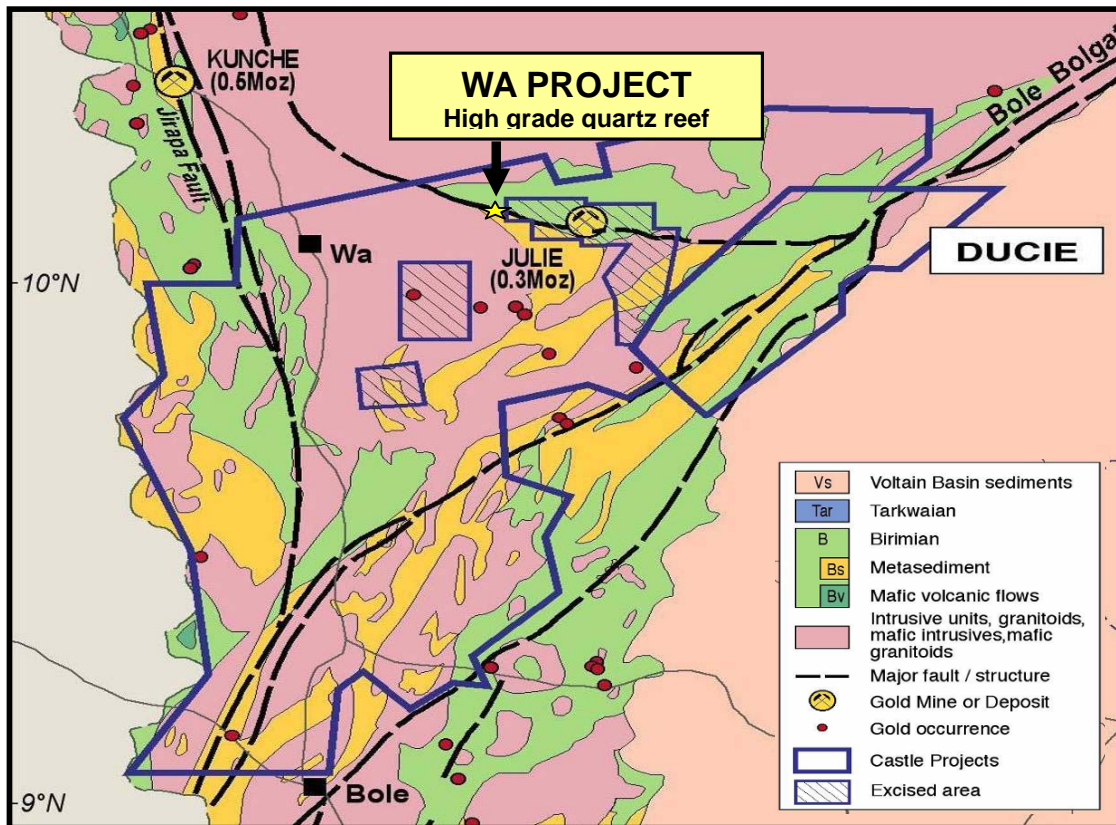
For further information please contact:

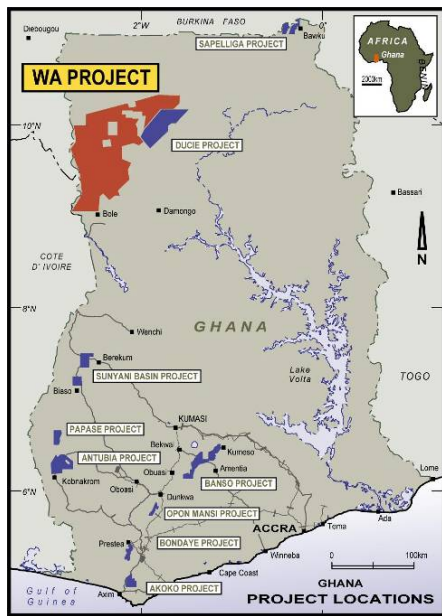
Michael Ivey
Managing Director & CEO
+618 9322 7018 or 0419 868 787

Information in this announcement that relates to Exploration Results is based on information compiled by Michael Fowler, Castle Minerals Limited Exploration Manager, who is a Member of The Australasian Institute of Mining and Metallurgy. Michael Fowler is a permanent employee of Castle Minerals Limited and has sufficient experience that is relevant to the style of mineralisation and type of deposit under consideration and to the activity which he is undertaking to qualify as a Competent Person as defined in the 2004 JORC Code. Michael Fowler consents to the inclusion in the announcement of the matters based on his information in the form and context in which it appears.



Reverse circulation chip samples with gold grades in the quartz reef (JWRC001)





Drill line at Julie West with workings in foreground

Significant Reverse Circulation Drilling Intercepts

Grid:	Local						
Prospect:	Julie West						
Project:	Wa						
Hole Number	Northing	Easting	mRL	Grid Az.	Dip	Hole Depth	Intercept
JWRC001	19880	10000	249	270	-50	24	5m @ 28.49 g/t gold from 8m <i>Includes</i> 1m @ 71.95 g/t gold from 8m <i>And</i> 1m @ 62.19 g/t gold from 9m
JWRC002	19881	10013	247	270	-50	30	3m @ 28.70 g/t gold from 22m <i>Includes</i> 1m @ 80.93 g/t gold from 23m
JWRC003	20081	9997	248	270	-50	24	8m @ 6.42 g/t gold from 1m <i>Includes</i> 3m @ 13.02 g/t gold from 6m <i>Includes</i> 1m @ 30.91 g/t gold from 7m
JWRC004	20083	10017	246	2701	-50	30	3m @ 2.58 g/t gold from 19m
JWRC006	19837	10002	248	270	-50	24	2m @ 6.43 g/t gold from 12m <i>Includes</i> 1m @ 10.61 g/t gold from 12m
JWRC007	19839	10019	246	270	-50	30	2m @ 14.47 g/t gold from 26m <i>Includes</i> 1m @ 20.19 g/t gold from 27m
JWRC008	19923	9997	248	270	-50	33	8m @ 4.63 g/t gold from 0m <i>Includes</i> 3m @ 10.3 g/t gold from 5m <i>Includes</i> 1m @ 21.57 g/t gold from 6m
JWRC009	19923	10014	247	270	-50	30	2m @ 1.33 g/t gold from 19m
JWRC010	19966	10004	250	270	-50	24	2m @ 13.7 g/t gold from 6m <i>Includes</i> 1m @ 25.53 g/t gold from 6m
JWRC011	19959	10013	250	270	-50	24	2m @ 6.23 g/t gold from 14m
JWRC012	19997	10002	252	270	-50	24	4m @ 1.92 g/t gold from 2m
JWRC013	19999	10016	252	270	-50	24	2m @ 2.08 g/t gold from 11m
JWRC014	20036	10001	253	270	-50	24	2m @ 14.88 g/t gold from 10m <i>Includes</i> 1m @ 21.75 g/t gold from 11m
JWRC015	20038	10015	253	270	-50	30	1m @ 4.35 g/t gold from 14m
JWRC016	20115	10009	253	270	-50	22	2m @ 3.93 g/t gold from 4m
JWRC017	20115	10021	252	270	-50	30	2m @ 3.43 g/t gold from 13m
JWRC018	20155	10005	252	270	-50	24	6m @ 2.53 g/t gold from 3m
JWRC019	20155	10018	251	270	-50	24	3m @ 5.90 g/t gold from 14m <i>Includes</i> 1m @ 10.09 g/t gold from 16m
JWRC020	20198	10002	247	270	-50	24	1m @ 7.52 g/t gold from 11m

Notes: Minimum Intersection Length = 1m, Interval Top Cut = None, Interval Bottom Cut = 0.50 ppm Au, Maximum Internal Dilution = 2m,

Final assay results from 1m RC drill samples riffle split on site.

Assay results from Transworld Laboratories Tarkwa, Ghana. Analysis for gold by 50 gram Fire Assay.

Reference samples, duplicates and blanks were routinely submitted and reported results were within acceptable limits.

Drill hole collars were surveyed by handheld GPS to an average accuracy of +/-5m