

30th September 2010

Level 3, 10 Outram St
West Perth WA 6005

PO BOX 437
West Perth WA 6872

Tel: +618 9322 7018
Fax: +618 9481 2335

ACN 116 095 802
www.castleminerals.com

ASX Announcement

Drilling discovers new zone of gold mineralisation at Julie West

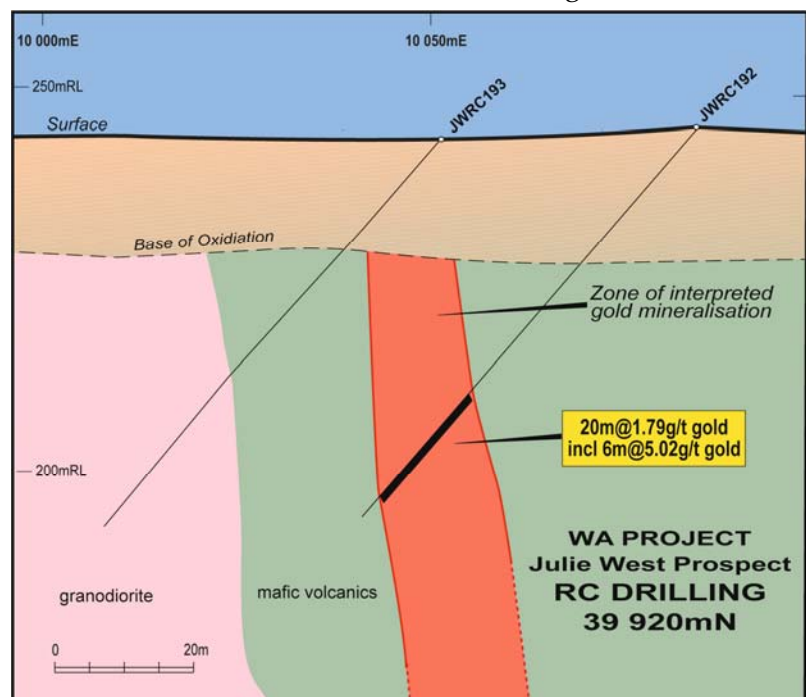
Castle Minerals Limited (ASX: CDT) is pleased to announce that wide spaced RC drilling testing a soil geochemical anomaly at the Julie West prospect in north west Ghana has returned an intercept of **20m @ 1.79g/t gold from 44m including 6m @ 5.02g/t gold from JWRC 192 and and 15m @ 1.30g/t gold from 10m in JWRC 181.**

This mineralisation is hosted within altered and pyritic mafic volcanic rocks and not by laminated quartz veins that to date have been the host for gold mineralisation in this area. This offers an additional style of gold mineralisation that will be the target of further work.

Castle's Managing Director, Mr Mike Ivey, said "These results are very encouraging and confirm that detailed geochemical sampling is an effective tool for discovering concealed gold mineralisation. We now have an additional style of mineralisation to target and are very keen to recommence drilling to follow up these results and test other anomalies that we have recently generated".*

Follow up RC drilling will be completed as soon as the wet season abates and drill rigs have been contracted to complete this work. Current information indicates that rain is easing but the creeks and rivers are full, affecting access where bridges are not available. Access is expected to improve by mid-October.

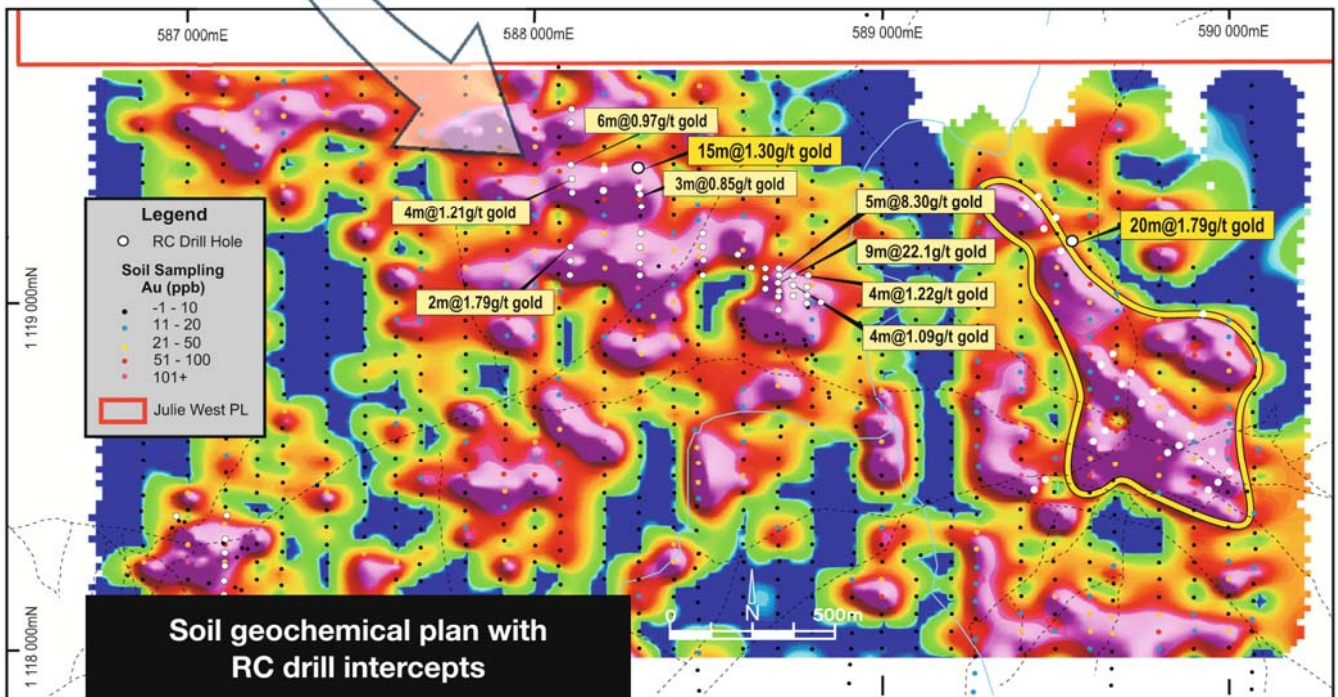
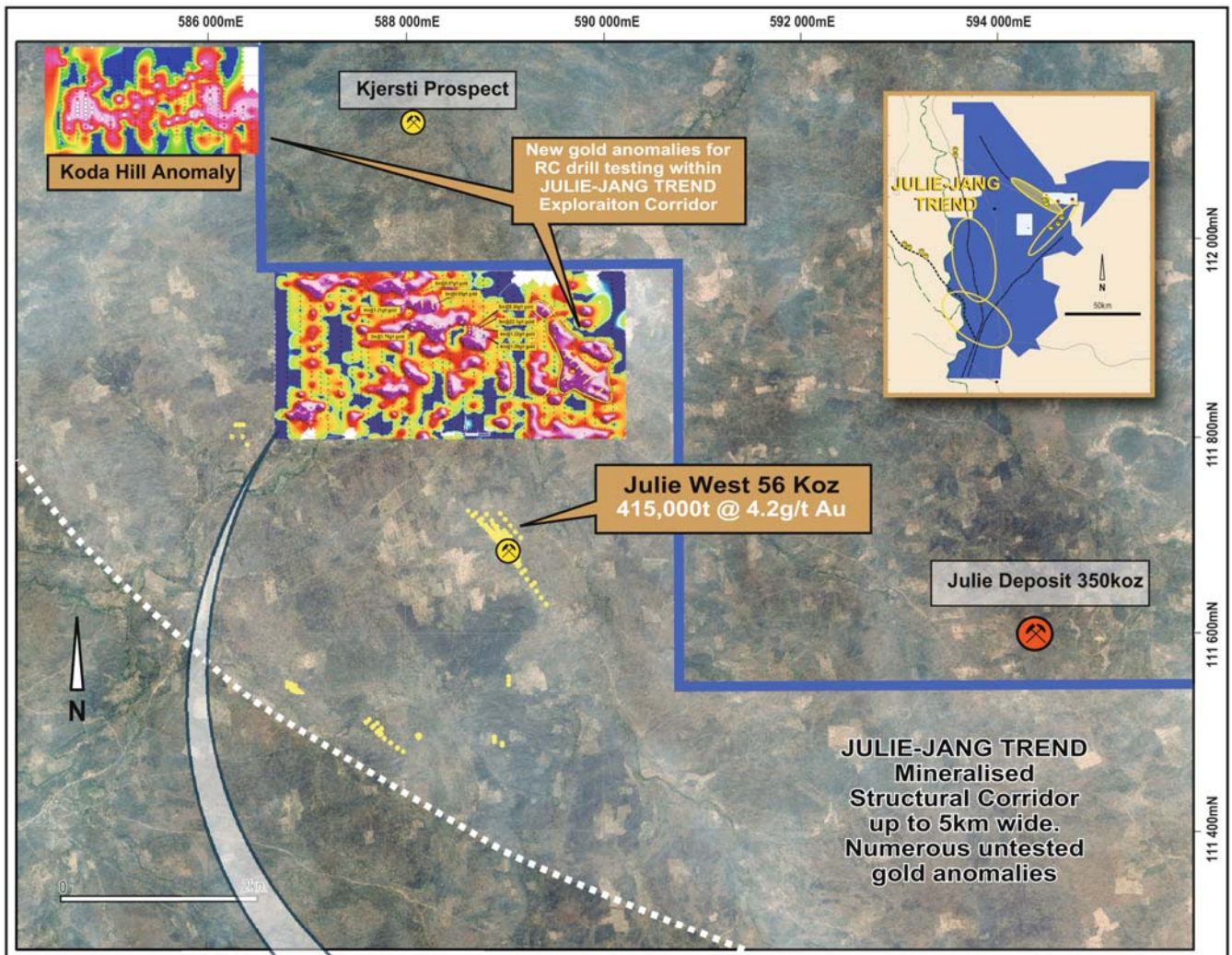
The Julie West prospect is within the Julie-Jang Trend of Castle's Wa Project in north west Ghana where Castle will shortly commence 35,000 metres of drilling to test numerous gold targets.



For further information please contact:

Michael Ivey
Managing Director & CEO
+618 9322 7018 or 0419 868 787

*Refer CDT ASX announcement of 3 September 2010 – Strong Gold Anomaly Defined at Koda Hill



Detailed soil geochemistry image with RC drill holes and significant results. Width of image is 3km. Koda Hill anomaly will shortly be subject to its first ever drill test.

Significant Drilling Intercepts

Castle Minerals

Grid: UTM
Prospect: Julie West
Project: Wa

Hole Number	Northing	Easting	mRL	Grid Az.	Dip	Hole Depth	Intercept
JWRC179	1119331	588200		186	-51	66	4m @ 0.84 ppm Au from 51m
JWRC180	1119383	588195		186	-50	72	3m @ 0.54 ppm Au from 0m 6m @ 0.21 ppm Au from 13m 5m @ 0.15 ppm Au from 24m
JWRC181	1119380	588298		185	-49	66	15m @ 1.30 ppm Au from 10m
JWRC182	1119331	588299		185	-49	66	11m @ 0.21 ppm Au from 20m 3m @ 0.29 ppm Au from 34m
JWRC192	1118791	589717		235	-48	66	1m @ 0.12 ppm Au from 25m 1m @ 0.16 ppm Au from 27m 1m @ 2.15 ppm Au from 35m 20m @ 1.79 ppm Au from 44m 6m @ 5.02 ppm Au from 47m
						<i>Includes</i>	
JWRC193	1118771	589691		234	-49	66	1m @ 0.16 ppm Au from 0m 1m @ 0.16 ppm Au from 4m
JWRC197	1118598	589608		234	-50	66	4m @ 0.42 ppm Au from 23m 1m @ 0.67 ppm Au from 56m
JWRC202	1118624	589886		236	-49	66	3m @ 0.33 ppm Au from 50m 1m @ 0.21 ppm Au from 59m
JWRC203	1118595	589856		233	-50	66	1m @ 0.15 ppm Au from 0m 1m @ 0.40 ppm Au from 4m
JWRC207	1118502	589999		236	-51	66	1m @ 0.32 ppm Au from 20m 8m @ 0.45 ppm Au from 58m

Notes: Minimum Intersection Length = 1m, Interval Top Cut = 999.00 ppm Au, Interval Bottom Cut = 0.10 ppm Au,

Interval Top Cut = 999.00 ppm Au, Interval Bottom Cut = 0.10 ppm Au,

Maximum Internal Dilution = 2m, Reporting Assays Greater than 15.00 ppm Au

Gold analysis performed by Intertek Laboratories Tarkwa Ghana on 1m RC drill samples using 50gm fire assay technique with AAS finish

A total of 29 RC holes were completed - holes not mentioned above did not report significant results

Julie West Gold Resource									
Julie West April 2009 Mineral Resource (1.0g/t Au Cut-Off Grade)									
Material Type	Indicated			Inferred			Total		
	Tonnes (t)	Au (g/t)	Au (ounces)	Tonnes (t)	Au (g/t)	Au (ounces)	Tonnes (t)	Au (g/t)	Au (ounces)
Oxide									
Transitional	66,700	3.8	8,200	3,500	7.8	900	70,200	4	9,000
Fresh	316,200	4.3	43,900	28,400	3.5	3,200	344,600	4.3	47,100
Total	382,900	4.2	52,100	31,800	4	4,100	414,700	4.2	56,200

Information in this announcement that relates to Exploration Results is based on information compiled by Michael Fowler, Castle Minerals Limited Exploration Manager, who is a Member of The Australasian Institute of Mining and Metallurgy. Michael Fowler is a permanent employee of Castle Minerals Limited and has sufficient experience that is relevant to the style of mineralisation and type of deposit under consideration and to the activity which he is undertaking to qualify as a Competent Person as defined in the 2004 JORC Code. Michael Fowler consents to the inclusion in the report of the matters based on his information in the form and context in which it appears.